

WWW.PROCEDIN.EU

# PROCEDIN

*Building Procurement Capability for Embedding and Driving Innovation*

# Legal Framework Training: Human Centred Design

*Valentina Schippers-Opejko*

Coordinator Urban Agenda Partnership on Innovative and Responsible Public Procurement on behalf of the City of Haarlem (NL), Chair Eurocities Working Group on Public Procurement



[vopejko@haarlem.nl](mailto:vopejko@haarlem.nl)



[linkedin.com/in/valentinaschippers](https://www.linkedin.com/in/valentinaschippers)



+31-6-46215424



*In collaboration with:*





**PROCEDIN:**  
*PROcurement  
Capability  
Embedding and  
Driving  
INnovation*

### What is Procurement of Innovation?

Public procurement is the process by which public authorities

### What domains are covered by the Project?

Green Circular

## PROJECT MISSION

INNOVATION PROCUREMENT CAPABILITY

We are on a mission to encourage the Procurement of Innovation capability development and accelerate the growth of Circular Economy and Green Mobility innovation ecosystems.

### What is Procurement of Innovation?

Public procurement is the process by which public authorities (such as government departments or local authorities) purchase works, goods or services from companies previously selected via a regulated, competitive and transparent procedure.

Innovation Procurement happens when public procurers procure the development (PCP) or deployment (PPI) of pioneering innovative solutions to address specific mid-to-long-term public sector needs.

### What domains are covered by the Project?

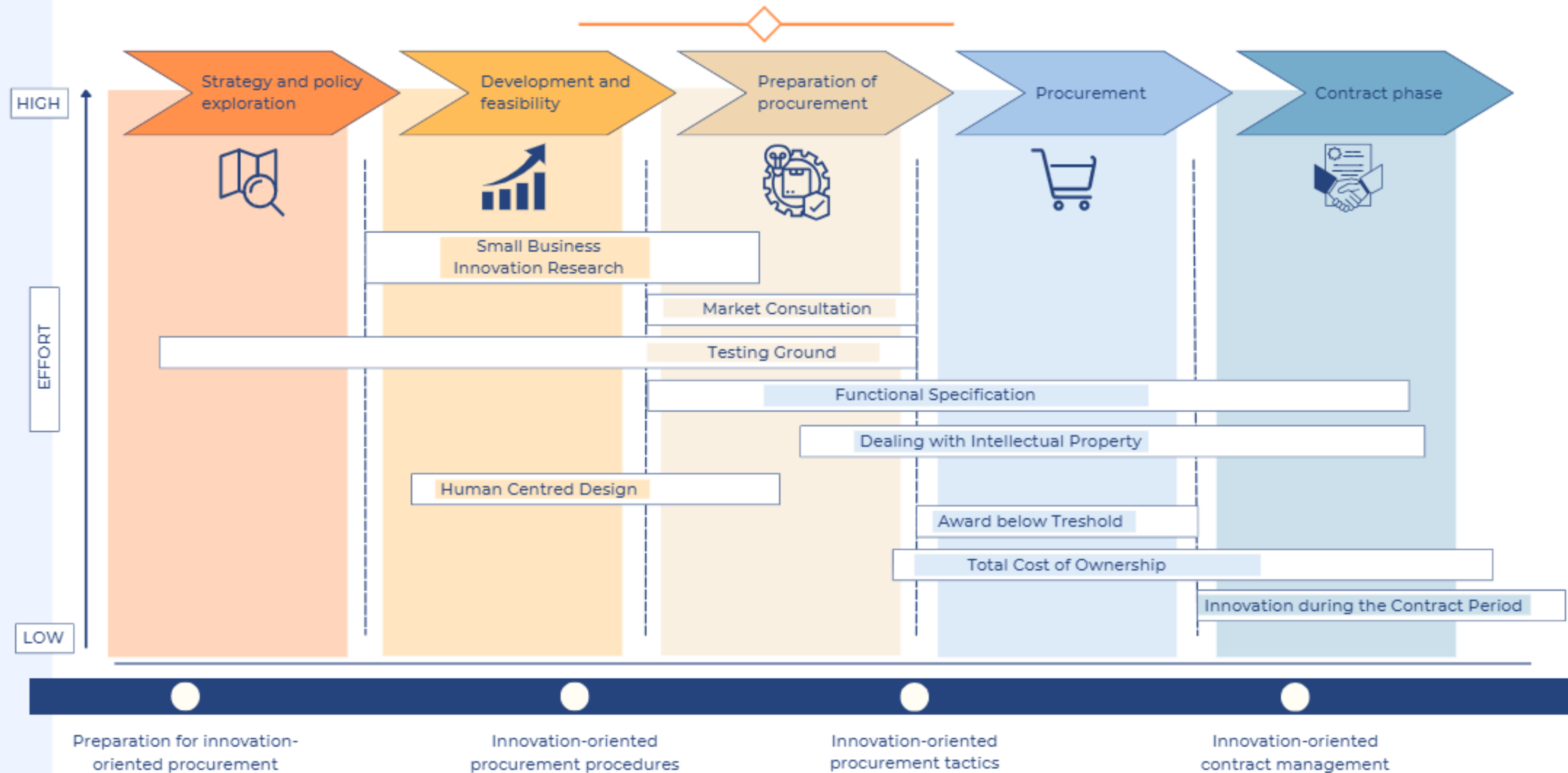
Green Mobility



Circular Economy



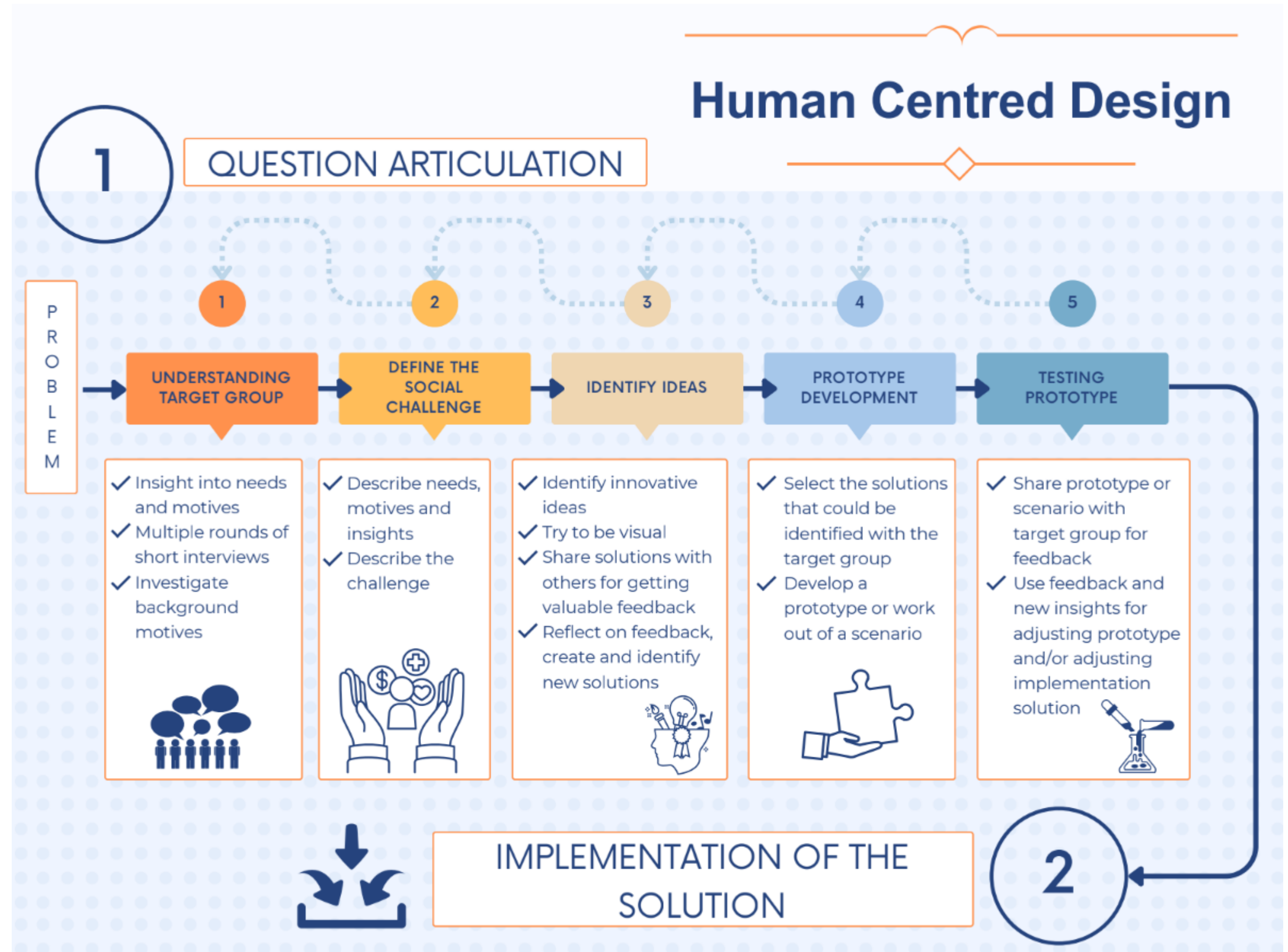
# CHOOSE THE RIGHT INSTRUMENT





# Human Centred Design

## A step-by-step guide



## City of Tampere, Finland: Integration Platform

The aim of the integration platform is to combine home and remote care technologies and the data they generate.

*This case has been put forward by KEINO Competence Centre*



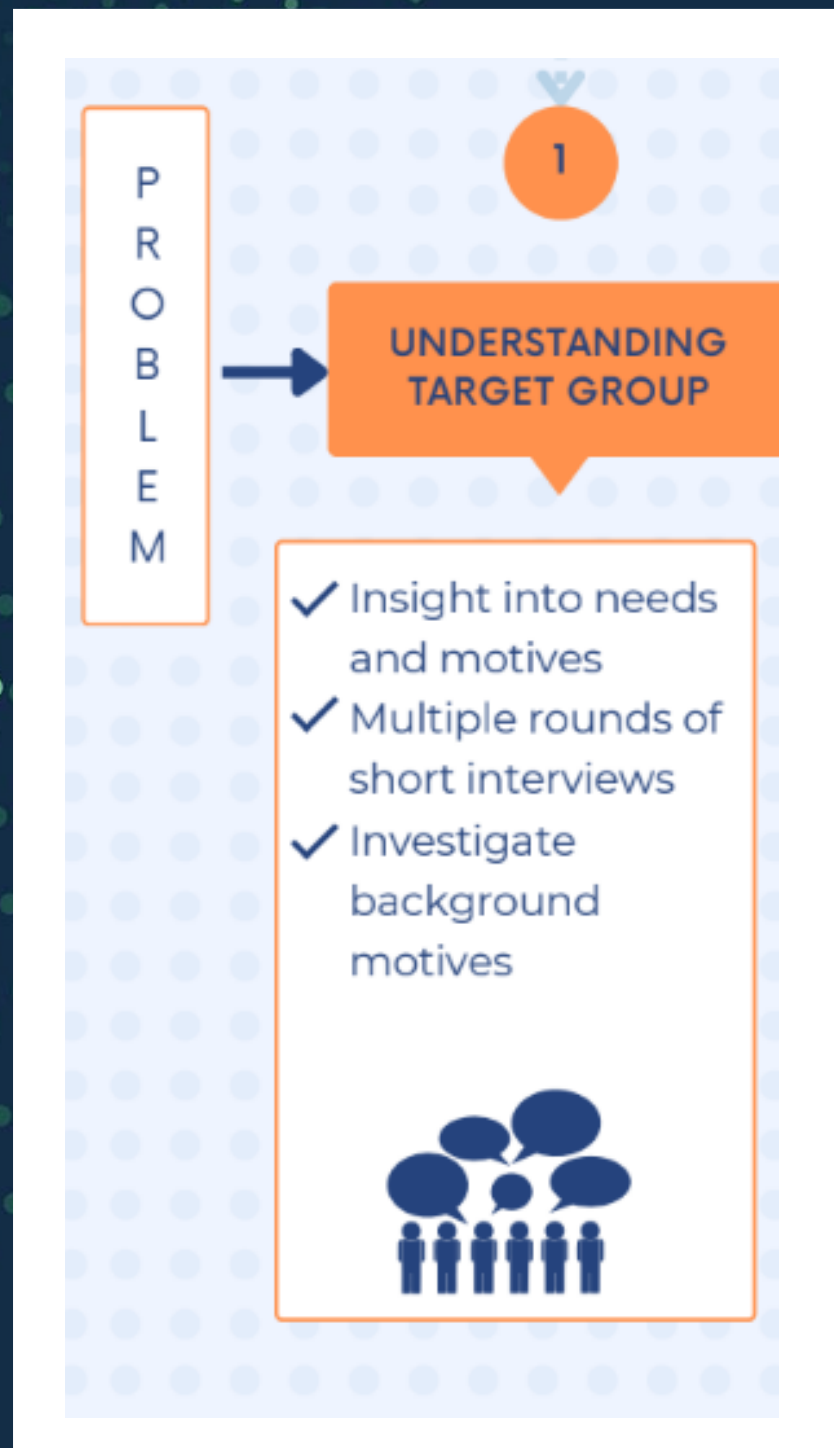
# 1. Question articulation

What is the problem, target group, social challenge?





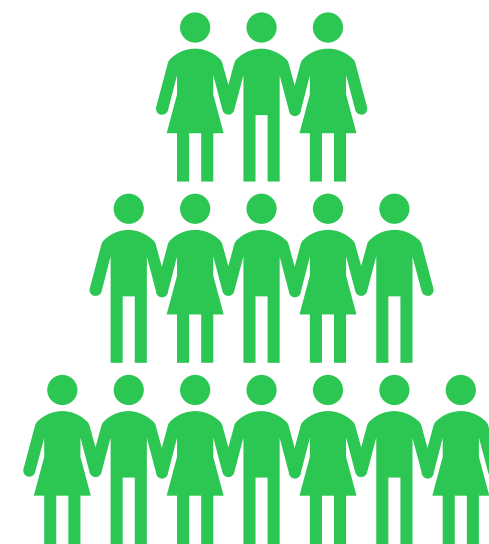
# 1.1 Understanding target group



## Case

### Target groups:

- Elderly in need of healthcare at home
- The loved ones of elderly
- Healthcare professionals



# Case

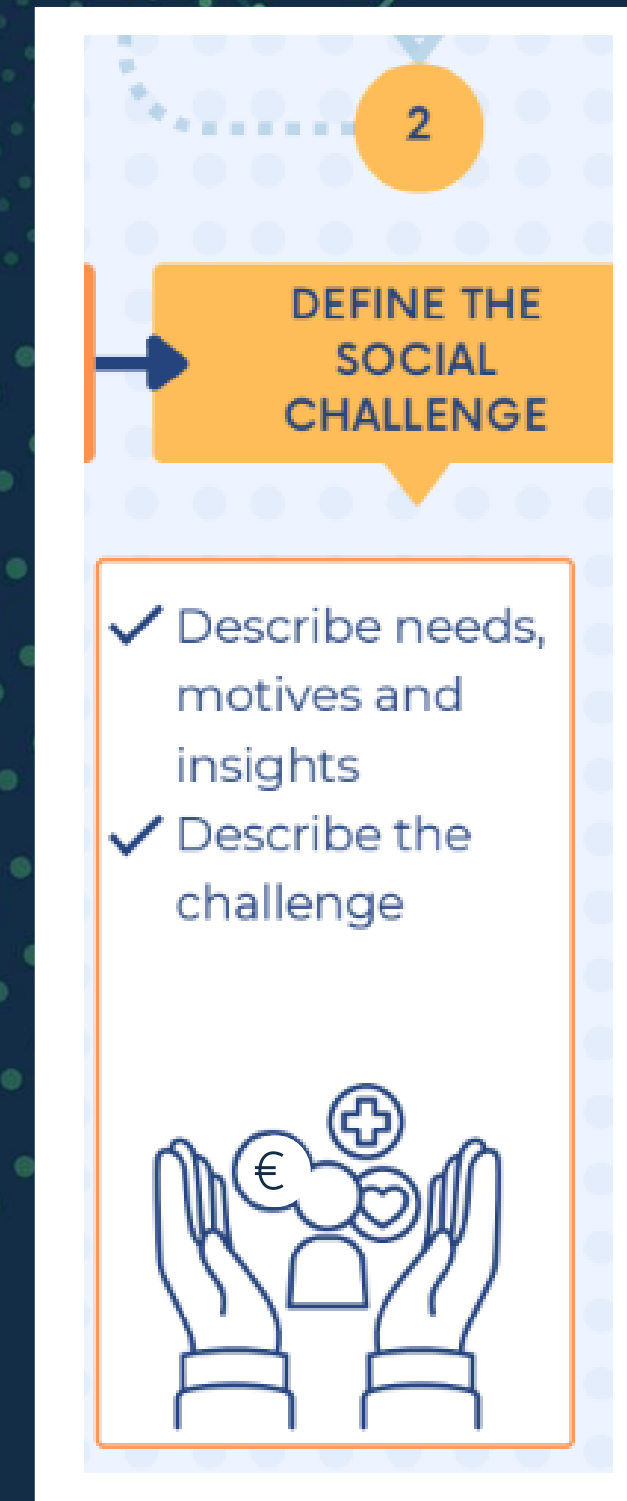
- The population ages
- Demand for home services and devices increases

➔ Looking for a solution to:

- enable living at home to be safer
- enable the health personnel to take better care of people who are still living at home

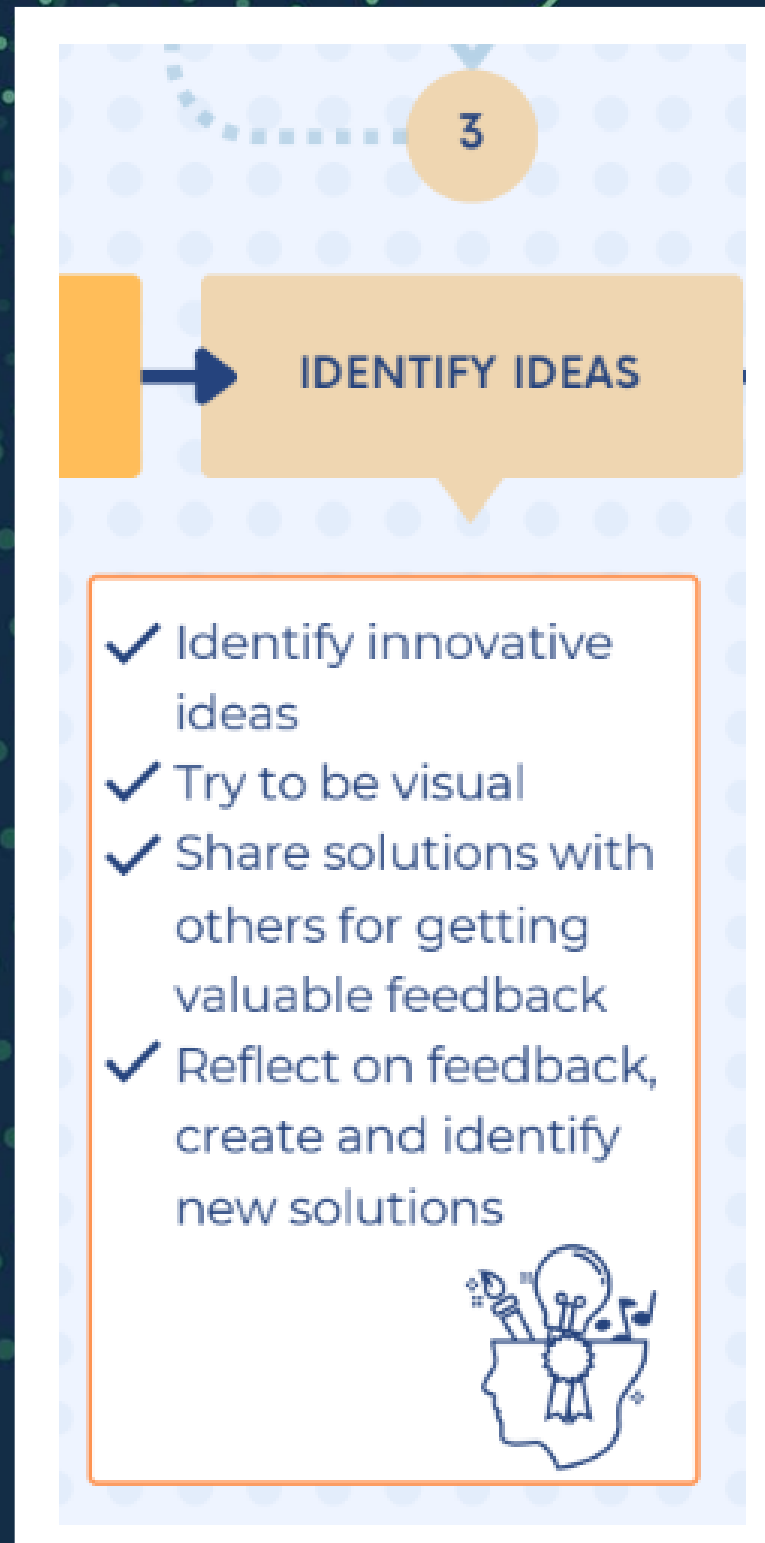


## 1.2 Define the social challenge





# 1.3 Identify ideas



## Case



Combining home and remote care technologies and the data they generate.

=> This data needs to be collected on a shared platform: an integration platform

Example devices:

- Blood pressure monitor
- A glucometer
- A weighing machine
- Or different sensors that measure movements at home

# Case

The integration platform will be open in a way that it is not based on any single company's product that is produced in a monopoly situation

Partner with companies in developing the platform



## 1.4 Prototype development



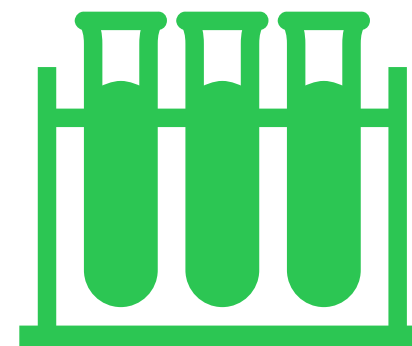


# 1.5 Testing prototype



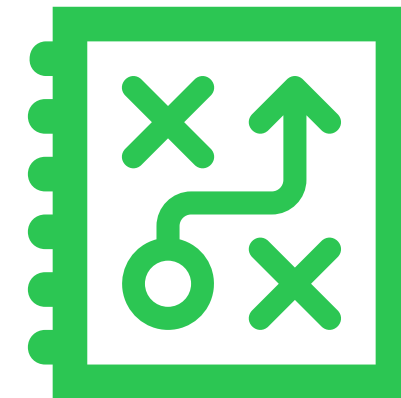
## Case

When a customer has a problem, it may not be necessary to go to the hospital anymore; or if it is necessary to go, the hospital personnel has better information about the patient's situation.



## 2. Implementation of the solution

- Healthcare professional can react quickly
- Increases sense of security for: customer & loved ones
- Minimizes unnecessary days in the hospital





In which case you could use Human Centred Design and why?

# MEET THE PROCEDIN CONSORTIUM

## UNIVERSITY OF TWENTE.





# PROCEDIN

*Building Procurement Capability for Embedding and Driving Innovation*

## THANK YOU!

[WWW.PROCEDIN.EU](http://WWW.PROCEDIN.EU)



@PROCEDIN



@PROCEDIN



**Funded by  
the European Union**

Funded by the European Union. Views and opinions expressed are however those of the author(s) only and do not necessarily reflect those of the European Union or the European Innovation Council and SMEs Executive Agency (EISMEA). Neither the European Union nor the granting authority can be held responsible for them.